

Installation Instructions 安裝說明書

FRONT TRACK BAR RELOCATION BRACKET

前橫連桿墊高座

#Q0482

Application 適用車型

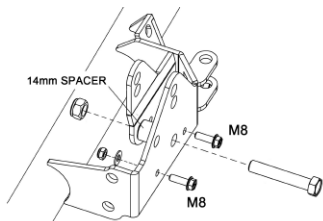
JEEP WRANGLER JK
(*LHD models only 僅適用左駕車型)

Components 內含配件

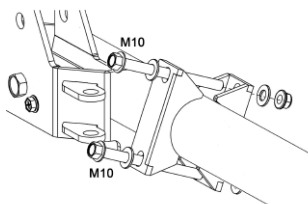
- ① Track bar bracket 橫連桿加高座.....1pcs
- ② Axle tube clamp bracket 對鎖固定架.....1pcs
- ③ Sway bar end link bracket 李仔串加高座...1pcs
- ④ Spacer 套管 (25x14.7x34).....1pcs
- ⑤ Bolt 螺絲 (M14x2.0x80).....1pcs
Nut 螺帽 (M14x2.0-22x14).....1pcs
Washer 華司 (28x15x2.5).....2pcs
- ⑥ Bolt 螺絲 (M12x1.75x70).....2pcs
Nut 螺帽(M12x1.75-19x12).....2pcs
Washer 華司(24x13x2.6).....4pcs
Spacer 套管(22x12.4x38).....2pcs
- ⑦ Bolt 螺絲 (M10x1.25x120).....2pcs
Nut 螺帽(M10x1.25-14x10).....2pcs
Washer 華司(20.8x10.7x2).....4pcs
- ⑧ Bolt 螺絲 (M8x1.25x25).....2pcs
Nut 螺帽(M8x1.25-13x8).....2pcs
Washer 華司 (16x8.4x1.4).....2pcs

Instructions 安裝說明

1. Remove the track bar and sway bar end link from the axle .
將前橫連桿及李仔串卸下車軸。
2. Place the new relocation bracket over the factory track bar axle side mounting.
將墊高座支架置於原本的橫連桿鎖點上。
3. Install supplied M14 spacer to the hole where the track bar was originally located on using factory hardware.
使用原廠螺絲及螺帽，將附件M14套管安裝至原本橫連桿的鎖孔。
4. Install supplied M8 bolts, nuts and washers to the below two mounting holes.
將附件M8 螺絲、螺帽及華司 安裝至下方兩鎖孔。

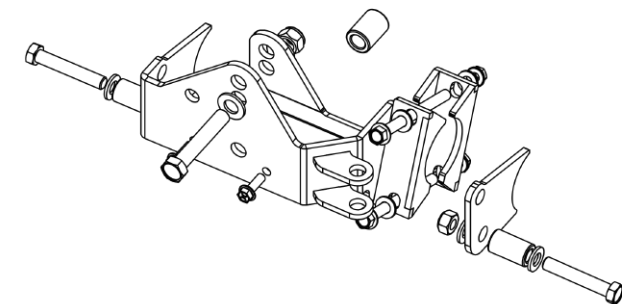


5. Install the axle tube clamp bracket using supplied M10 bolts, nuts and washers.
使用附件M10 螺絲、螺帽及華司 安裝軸外殼對鎖固定架。

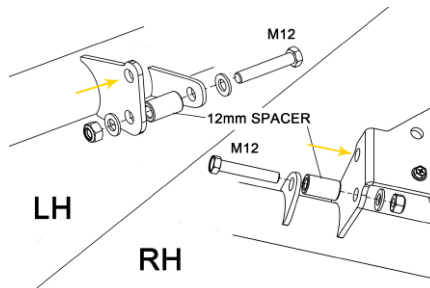


Caution 注意事項

- Installation is recommended to be performed by licensed mechanics with necessary tools to ensure safety. Incorrect installation may cause injury, damage to the product or vehicle. 安裝建議由合格的技師及工具執行以確保安全。安裝錯誤可能對人員、產品及車輛造成傷害。
- Note the routing of wires and cables before installation, or please refer to factory manual. 安裝前請先記下線路的安裝路徑及位置以維持原廠配置。有疑問時請參考原廠手冊。
- Tighten bolts and nuts firmly by using handtools, and with specified torque if mentioned. 安裝過程請使用手動工具確實鎖緊螺帽及螺絲。如有特別註明請依照說明指示的扭力上鎖。



6. Install supplied M12 bolts, nuts, washers and spacers to where the RH side sway bar end link was originally located on.
將附件M12螺絲、螺帽、華司及套管安裝至原本右側李仔串的鎖孔。
7. Install the LH side sway bar end link relocation bracket to the original end link mounting using supplied M12 bolts, nuts, washers and spacers .
將附件M12螺絲、螺帽、華司及套管安裝至原本右側李仔串的鎖孔。



8. Install the track bar to the new relocation bracket using supplied M14 bolt, nut and washers .
使用附件M14螺絲、螺帽及華司，將橫連桿安裝至墊高座。
9. Install the sway bar end links to the relocation brackets
將李仔串安裝至墊高座。
10. Weld the relocation brackets to the axle tube.
將墊高座焊接至輪軸外殼。

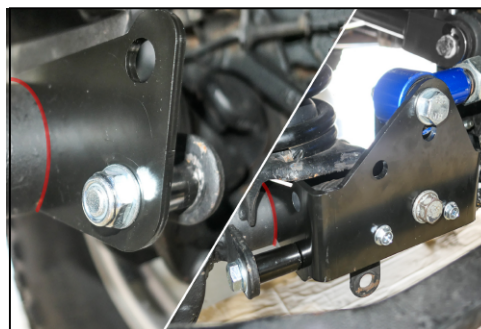


Illustration of installed state
安裝完成示意圖